

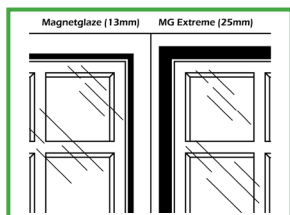
Tubeway supply a comprehensive choice of cost effective secondary double glazing products, designed for easy installation by any DIY enthusiast, requiring no special tools to fit. Each product allows you to insulate your windows against heat loss and draughts, as well as noise; the range offers a choice of using either plastic glazing sheet or glass. All Easyfix[®] secondary glazing systems are suitable for removal in warmer weather and later re-installation, with some allowing repeated easy access suitable for daily ventilation without removing.

Remember to draught-proof your windows, doors and letterboxes using Easyfix[®] draught excluders, to enhance the benefits gained by secondary glazing.

WHICH SECONDARY GLAZING SYSTEM TO CHOOSE?

Whatever your glazing requirements, there is a system to match them. Here is a quick summary of the **9 Easyfix systems**, and their main features:

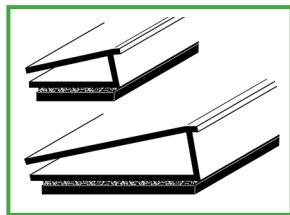
MAGNETGLAZE & MAGNETGLAZE EXTREME MAGNETIC STRIPS



- Plastic sheet only
- Steel strip fixed to frame
- Magnetic strip fixed to sheet
- Suitable for 2mm to 4mm glazing sheets or 4mm to 6mm glazing (Extreme) sheets
- Cosmetic finishing trims available in 20mm or 32mm widths

The Magnetglaze and Magnetglaze Extreme systems provide quick removal for plastic sheet attached to the window surrounds using magnetic and steel tape. Magnetglaze is supplied in 5m and 30m bulk dispensing packs and Magnetglaze Extreme (25mm wide for extra grip) in a 10m dispensing pack. Easy to use and install, simply lift the panel off the window when access is required. Visible parts are white, finishing trims available.

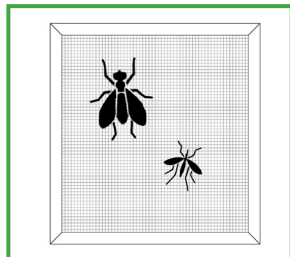
MAGNETGLAZE PRO & MAGNETGLAZE PRO EXTREME RIGID CAPPING



- Plastic sheet only
- Neat appearance
- 2mm to 4mm glazing (Pro) or 4mm to 6mm glazing (Pro Extreme)
- Steel strip stuck to frame
- Magnetic strip is attached to plastic edging

Using the same steel and magnetic systems as Magnetglaze - Magnetglaze Pro and Magnetglaze Extreme have a smart rigid plastic edging that will neatly mitre to frame the glazing sheet but still allowing easy removal. Magnetglaze Pro available in 2.44m and 1.22m lengths in choice of white or brown. Magnetglaze Pro Extreme available in 2.44m lengths only in white or brown, this system ideal for larger and more draughty windows.

MAGNETGLAZE ADD ON - FLYSCREEN KITS



- Fits to existing Magnetglaze and Magnetglaze Pro systems
- Neat appearance
- White and brown trims
- Stops flies, insects and creepy crawlies

Magnetglaze Flyscreen uses a fibreglass mesh, magnetic 13mm strips and an adhesive lipped edging. The screen clips onto existing steel tape for insect free ventilation in Summer, then can be stored in winter when the insulation panel is used again.

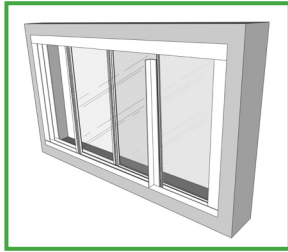
MAGNETGLAZE ADD ON - SASH MULTI-PANEL KITS



- 2mm Plastic sheet uses standard kit or Heavy Duty kit for 4mm sheet
- Requires the basic Magnetglaze system for both standard and Extreme (4mm sheet)
- Repeated removal of glazing sheet possible
- Ideal for sash windows

Specifically designed for sash windows, where daily ventilation and night-time noise and heat insulation are required. Magnetglaze Sash 2mm has a jointing strip that allows the top panel to be removed and stored on the face of the bottom panel for convenience. Visible components are white. The 4mm Heavy Duty kits use a rigid joint and bristle seal to create the seal between stronger 4mm sheets. Suitable for larger and draughtier sash windows. Visible components are white or brown.

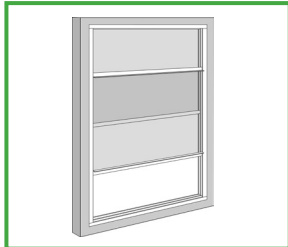
TRACKGLAZE HORIZONTAL SLIDING SYSTEM



- Glass or plastic sheet
- Smart and easy to use
- Versatile design for 4mm glazing
- Components are self-adhesive & sticks within window cavity

Trackglaze is a smart and easy to install system that gives instant access to your outer windows via simple slide opening. It uses Double Sliding track on all 4 sides of the window cavity, Bristle Seal draught excluder on the edges of each glazing sheet and an Angle for a finger-pull handle. All components are self-adhesive. Packs available in 2m or 1m lengths and in white or brown.

TRACKGLAZE VERTICAL SLIDING SYSTEM

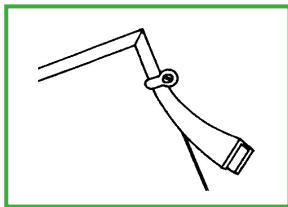


- Vertical sliding
- Quick and easy access and installation
- Suits sash windows
- Self-adhesive components
- Smart appearance

Trackglaze Vertical allows a top and bottom pane to align with the outer window and be raised, lowered and fixed into position at will. Fully insulated tracks, 4mm plastic panels and push fit handles, suitable for windows up to 2m x 1.2m

Excellent system for insulating sash windows against heat loss and noise intrusion, allowing quick access to the outer window for ventilation. Colour choice of white or brown.

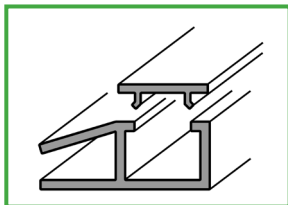
CLIPGLAZE FLEXIBLE EDGING



- Glass or plastic sheet
- Turnbutton removal
- Screwed to frame
- 2mm to 6mm glazing
- Install inside or out

Flexible edging channel in clear, brown or white which is easily mitred for a neat finish and held in place with the glazing sheet by nylon clips that are screwed to the window frame. The Clipglaze system is available in handy 5m and 15m kits, or with each component part separate, and is made in 2mm, 3mm, 4mm, 5mm and 6mm channel widths. Tubeway have made and supplied this system continuously for over 50 years!

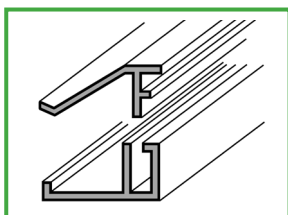
SUPERGLAZE RIGID EDGING



- Glass or plastic sheet
- Smart appearance
- Screwed to frame
- 3mm or 4mm glazing
- Install inside or out

Superglaze is a 2 part rigid PVC system suitable for 3mm and 4mm glass or plastic sheet. Lengths of extrusion grip the edge of the glazing material before being attached to the window frame or surround with screws. The screws are hidden with a press in cover strip, and the corners can be mitred for a smart professional appearance. Available in 2.44m and 1.22m lengths, white or brown.

EASYGLAZE 2 PART RIGID EDGING



- Plastic sheet only
- Self-adhesive fixing
- Smart appearance
- 2mm glazing sheet only

Easyglaze is an alternative rigid 2 part diy glazing system that fixes to the window frame with double sided tape, and after adding plastic glazing sheet, a top section is press fitted to hold it in place and complete the neat and professional appearance. Easyglaze can be mitred to form a frame. Available in 2.44m and 1.22m lengths, white or brown.

FILMGLAZE HEAT-SHRINK SYSTEM



- Thermal film
- Self adhesive
- Cost-effective
- Quick to install

Filmglaze uses a sheet of thermal film that is fixed to the window surround using double sided tape. Once fitted the film is stretched by gentle use of a hairdryer to give effective and low cost winter insulation and draught proofing. Sticky tape and film are clear / transparent once installed.



TUBEWAY CAN ALSO SUPPLY PACKS OF ACRYLIC GLAZING SHEETS - ASK FOR DETAILS

TUBEWAY (SALES) LIMITED, Elton Park, Hadleigh Road, Ipswich, IP2 0HN. Tel: 01473 251051 Fax: 01473 236044
Buy online at www.secondarydiyglazing.com email: sales@tubeway.co.uk website: www.tubewaysales.com